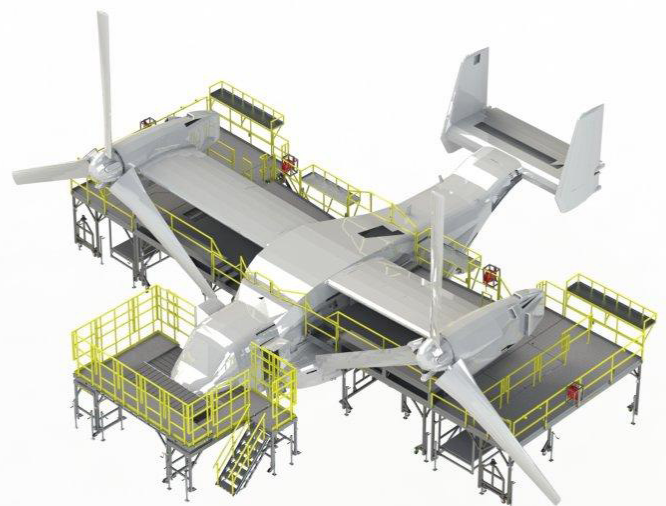


MV-22 / CV-22 MAINTENANCE PLATFORM



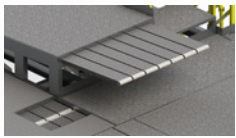
The FlexDecks V-22 Nose and Wing Maintenance Platforms were designed with direct input from V-22 service technicians. Featuring a compact footprint and high-strength, lightweight aluminum and steel construction, the V-22 platform conforms to, meets and exceeds OSHA requirements. The platforms offer full nose and wing fall protection and enhanced worker safety while creating efficiencies in the maintenance process. This platform is easily mobile when necessary and securely locked in place during maintenance procedures.



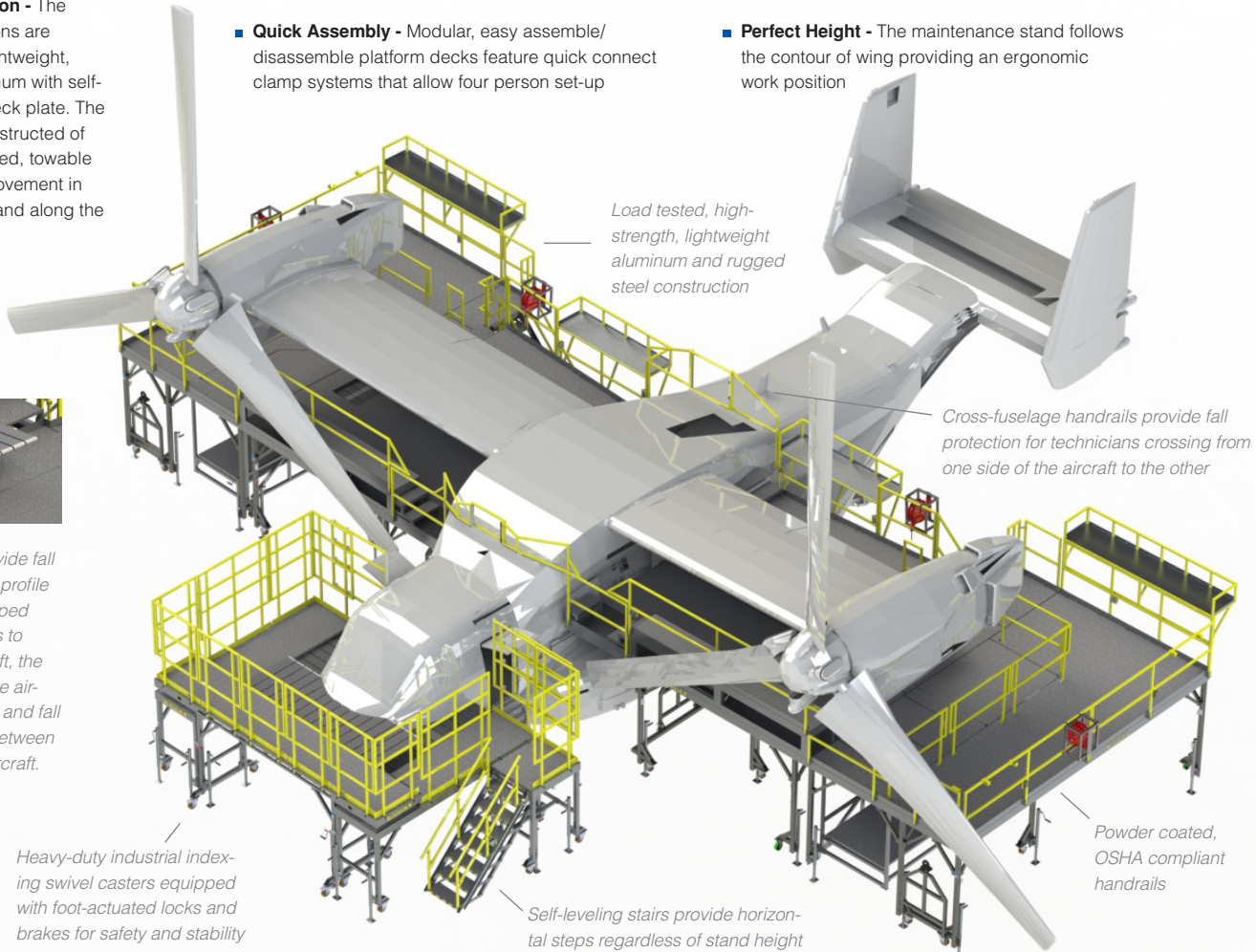
MV-22 / CV-22 MAINTENANCE PLATFORM

FEATURES

- **Adjustability** - Two-foot adjustability allows for aircraft jacking and corresponding stand adjustments
- **Rugged Construction** - The modular deck sections are constructed from lightweight, high-strength aluminum with self-draining, anti-slip deck plate. The leg sections are constructed of steel providing rugged, towable deck sections for movement in and out of hangars and along the flightline
- **Access Under Stands** - Purpose-designed leg bracing and substructure construction allows personnel and equipment movement under stands and access to engines, landing gear and support equipment storage
- **Quick Assembly** - Modular, easy assemble/disassemble platform decks feature quick connect clamp systems that allow four person set-up
- **Optional Lighting** - Provides underwing, engine and landing gear illumination
- **Mobility** - Engineered for transport on flat-bed trailers
- **Perfect Height** - The maintenance stand follows the contour of wing providing an ergonomic work position



Autolock sliders provide fall protection along the profile of the aircraft. Equipped with rubber bumpers to protect skin of aircraft, the sliders conform to the aircraft, eliminating trip and fall hazards and gaps between the stand and the aircraft.



The **V-22 Maintenance Platform** provides a maintenance bay to facilitate complete fall protection for technicians servicing the aircraft. Maintenance Platforms are designed for easy maneuverability and can be separated from the other components for convenient storage when not in use.

WARRANTY INFORMATION

FlexDecks provides a three (3) year warranty on the total platform, as well as part listing for identification and ordering of replacement parts.

OSHA COMPLIANT

FlexDecks V-22 Maintenance Stands are constructed from lightweight, high-strength structural grade 6061 aluminum with rugged, steel leg sets. All welding is performed in accordance with AWS D1.1 & D1.2. Each design features appropriate load ratings for the application. FlexDecks stands provide complete OSHA compliance for fall prevention during maintenance procedures.

WHY FLEXDECKS?

Maximizing safety at height requires proper setup and training. FlexDecks provides full technical support and optional training upon delivery. One manager with total accountability handles your project. Piecemeal competitors can't compare with FlexDecks' turnkey costs and services.